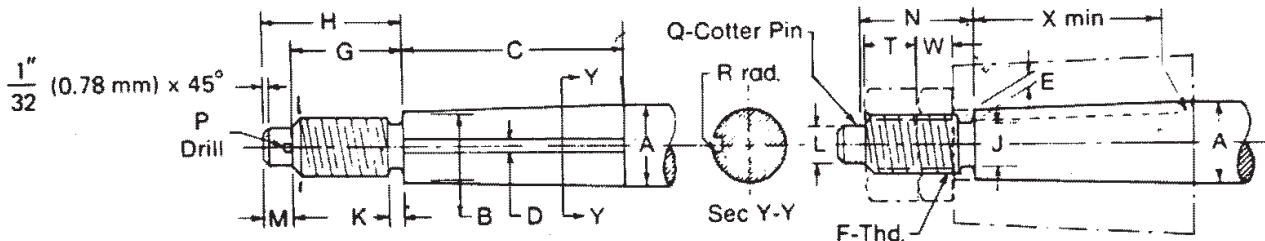


shaft ends taken from SAE Specification J 756.

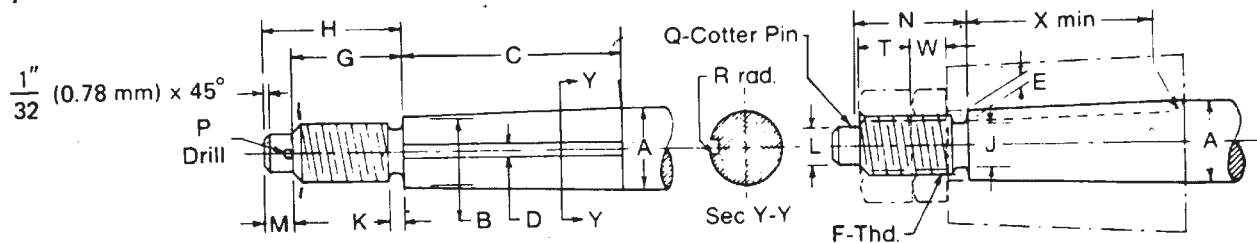


Taper = 3/4 in. (19.05 mm) on diameter per ft. (304.8 mm) - 1/16 in. (1.59 mm) per in. (25.4 mm) = 3 deg 34 min 47 sec total included angle.

Propeller shaft ends for shafts 3/4 to 3 inches (19.05 to 76.20 mm) in diameter.

Nominal Shaft Dia, in. (mm)	Dia, Small End, in. (mm) B		Taper Length, in. (mm) C	Keyway Width, in. (mm) D			Keyway Side Depth ^a , in. (mm) E			Keyway Fillet Radius ^b , in. (mm) R	Thread ^c , in. (mm) F		End of Taper to End of Thread, in. (mm) G	Extension Beyond Taper, in. (mm) H
	A	Min		Max	Nominal	Min	Max	Nominal	Min		Max	Diameter		
1 (25.40)	0.827 (21.01)	0.829 (21.06)	2-3/4 (69.85)	1/4 (6.35)	0.249 (6.32)	0.250 (6.35)	1/8 (3.18)	0.125 (3.18)	0.127 (3.23)	1/32 (0.80)	3/4 (19.05)	10	1-7/16 (36.51)	1-3/4 (44.45)
1-1/8 (28.58)	0.929 (23.60)	0.931 (23.65)	3-1/8 (79.38)	1/4 (6.35)	0.249 (6.32)	0.250 (6.35)	1/8 (3.18)	0.125 (3.18)	0.127 (3.23)	1/32 (0.80)	3/4 (19.05)	10	1-7/16 (36.51)	1-3/4 (44.45)
1-1/4 (31.75)	1.030 (26.16)	1.032 (26.21)	3-1/2 (88.90)	5/16 (7.94)	0.3115 (7.91)	0.3125 (7.94)	5/32 (3.97)	0.157 (3.99)	0.160 (4.06)	1/16 (1.59)	7/8 (22.23)	9	1-5/8 (41.28)	2 (50.80)
1-3/8 (34.93)	1.132 (28.75)	1.134 (28.80)	3-7/8 (98.43)	5/16 (7.94)	0.3115 (7.91)	0.3125 (7.94)	5/32 (3.97)	0.157 (3.99)	0.160 (4.06)	1/16 (1.59)	1 (25.40)	8	1-13/16 (46.04)	2-1/4 (57.15)
1-1/2 (38.10)	1.233 (31.32)	1.235 (31.37)	4-1/4 (107.95)	3/8 (9.53)	0.374 (9.50)	0.375 (9.53)	3/16 (4.76)	0.189 (4.80)	0.192 (4.88)	1/16 (1.59)	1-1/8 (28.58)	7	2 (50.80)	2-7/16 (61.91)
1-3/4 (44.45)	1.437 (36.50)	1.439 (36.55)	5 (127.0)	7/16 (11.11)	0.4365 (11.09)	0.4375 (11.11)	7/32 (5.56)	0.219 (5.56)	0.222 (5.64)	1/16 (1.59)	1-1/4 (31.75)	7	2-1/4 (57.15)	3-3/4 (69.85)
2 (50.80)	1.640 (41.66)	1.642 (41.71)	5-3/4 (146.05)	1/2 (12.70)	0.499 (12.67)	0.500 (12.70)	1/4 (6.35)	0.251 (6.38)	0.254 (6.45)	1/16 (1.59)	1-1/2 (38.10)	6	2-5/8 (66.68)	3-1/8 (79.88)

shaft ends taken from SAE Specification J 756.



Taper = 3/4 in. (19.05 mm) on diameter per ft. (304.8 mm) - 1/16 in. (1.59 mm) per in. (25.4 mm) = 3 deg 34 min 47 sec total included angle.

Propeller shaft ends for shafts 3/4 to 3 inches (19.05 to 76.20 mm) in diameter.

Nominal Shaft Dia, in. (mm)	Dia, Small End, in. (mm) B		Taper Length, in. (mm) C	Keyway Width, in. (mm) D			Keyway Side Depth ^a , in. (mm) E			Keyway Fillet Radius ^b , in. (mm) R	Thread ^c , in. (mm) F		End of Taper to End of Thread, in. (mm) G	Extension Beyond Taper, in. (mm) H
	A	Min		Max	Nominal	Min	Max	Nominal	Min		Max	Diameter		
3/4 (19.05)	0.624 (15.85)	0.626 (15.90)	2 (50.80)	3/16 (4.76)	0.1865 (4.74)	0.1875 (4.76)	3/32 (2.38)	0.095 (2.41)	0.097 (2.46)	1/32 (0.80)	1/2 (12.70)	13	1-1/16 (26.99)	1-5/16 (33.34)
7/8 (22.23)	0.726 (18.44)	0.728 (18.49)	2-3/8 (60.33)	1/4 (6.35)	0.249 (6.32)	0.250 (6.35)	1/8 (3.18)	0.125 (3.18)	0.127 (3.23)	1/32 (0.80)	5/8 (15.88)	11	1-1/4 (31.75)	1-1/2 (38.10)
1 (25.40)	0.827 (21.01)	0.829 (21.06)	2-3/4 (69.85)	1/4 (6.35)	0.249 (6.32)	0.250 (6.35)	1/8 (3.18)	0.125 (3.18)	0.127 (3.23)	1/32 (0.80)	3/4 (19.05)	10	1-7/16 (36.51)	1-3/4 (44.45)
1-1/8 (28.58)	0.929 (23.60)	0.931 (23.65)	3-1/8 (79.38)	1/4 (6.35)	0.249 (6.32)	0.250 (6.35)	1/8 (3.18)	0.125 (3.18)	0.127 (3.23)	1/32 (0.80)	3/4 (19.05)	10	1-7/16 (36.51)	1-3/4 (44.45)
1-1/4 (31.75)	1.030 (26.16)	1.032 (26.21)	3-1/2 (88.90)	5/16 (7.94)	0.3115 (7.91)	0.3125 (7.94)	5/32 (3.97)	0.157 (3.99)	0.160 (4.06)	1/16 (1.59)	7/8 (22.23)	9	1-5/8 (41.28)	2 (50.80)
1-3/8 (34.93)	1.132 (28.75)	1.134 (28.80)	3-7/8 (98.43)	5/16 (7.94)	0.3115 (7.91)	0.3125 (7.94)	5/32 (3.97)	0.157 (3.99)	0.160 (4.06)	1/16 (1.59)	1 (25.40)	8	1-13/16 (46.04)	2-1/4 (57.15)
1-1/2 (38.10)	1.233 (31.32)	1.235 (31.37)	4-1/4 (107.95)	3/8 (9.53)	0.374 (9.50)	0.375 (9.53)	3/16 (4.76)	0.189 (4.80)	0.192 (4.88)	1/16 (1.59)	1-1/8 (28.58)	7	2 (50.80)	2-7/16 (61.91)